



Deansgate Square, Owen Street, Manchester
Offers In Excess Of £370,000

Ascend
Built on higher standards

Deansgate Square, Owen Street, Manchester

** TWO BEDROOM APARTMENT WITH SECURE ALLOCATED PARKING **

Experience Elevated City Living at Deansgate Square - Welcome to this exceptional apartment within the iconic Deansgate Square Towers, one of Manchester's most prestigious and sought-after developments. Designed with sophistication and comfort in mind, this beautifully appointed residence offers a spacious reception area, two double bedrooms, and two contemporary bathrooms, blending modern design with effortless style.

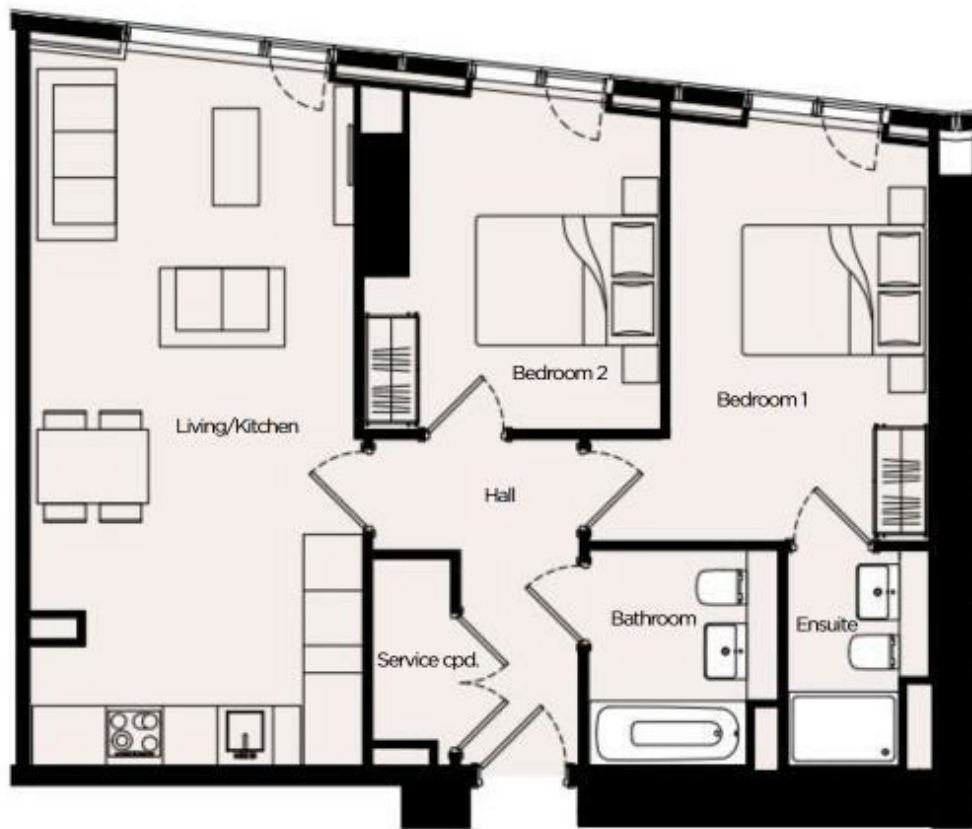
Positioned in the heart of Manchester's vibrant high-rise district, the apartment provides residents with best-in-class amenities and an exclusive lifestyle experience. Enjoy access to a world-class gym, swimming pool, spa, basketball court, private studios, co-working lounges, and bars, all complemented by a 24-hour concierge service for complete convenience and peace of mind.

Perfectly located just moments from Deansgate train station, this property offers unrivalled connectivity for commuters, while the Arndale Centre, Spinningfields, and the city's renowned dining and cultural destinations are all within easy reach.

Currently tenanted at £2,150pcm on a 6-month term (January 2026), the property presents an appealing opportunity for both buy-to-let investors and those seeking a luxurious new home in one of Manchester's most desirable addresses.



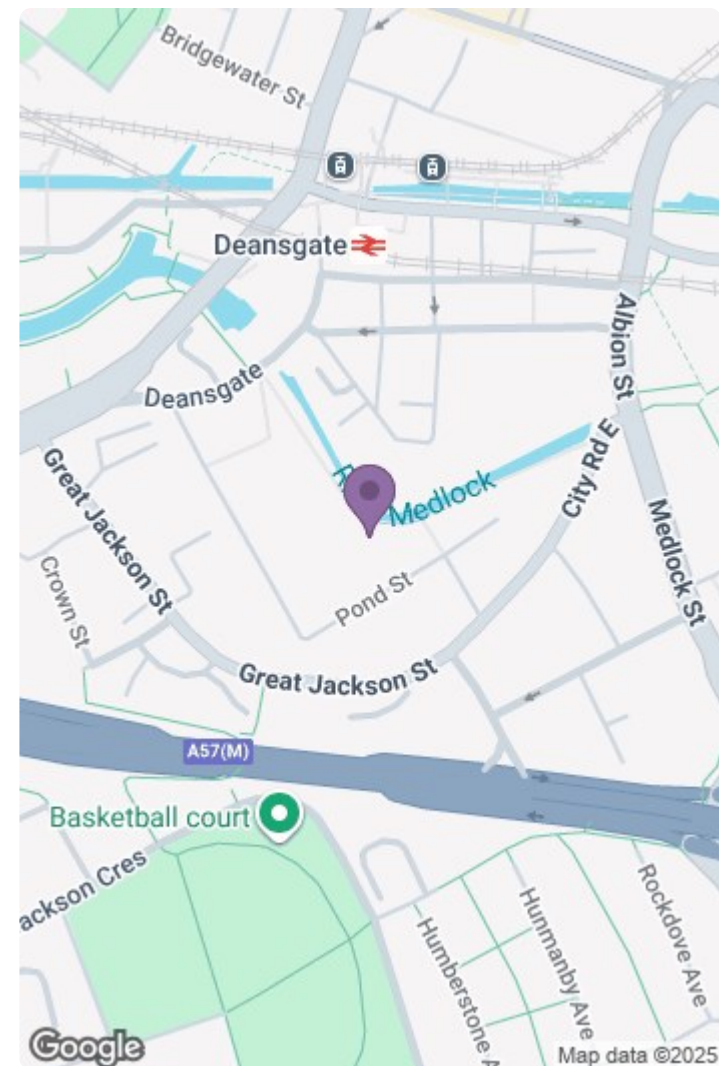
Please note that we have not tested any apparatus, equipment, fixtures, fittings or services, and so cannot verify they are in working order or fit for their purpose. Furthermore solicitors should confirm moveable items described in the sales particulars are, in fact, included in the sale since circumstances do change during marketing or negotiations. A final inspection prior to exchange of contracts is also recommended. Although we try to ensure accuracy, measurements used in this brochure may be approximate. Therefore if intending purchasers need accurate measurements to order carpeting or to ensure existing furniture will fit, they should take such measurements themselves.



SIZES	METRIC (M)	IMPERIAL
LOUNGE / KITCHEN	7.73 x 3.50	25'4" x 11'5"
BEDROOM	4.56 x 2.84	14'11" x 9'3"
BEDROOM 2	3.66 x 3.21	12'0" x 10'6"

OVERALL:

73.02 M² | 786 FT²



Energy Efficiency Rating		Environmental Impact (CO ₂) Rating	
Current	Future	Current	Future
England & Wales		England & Wales	

